



Hotline™ Blood and Fluid Warmer

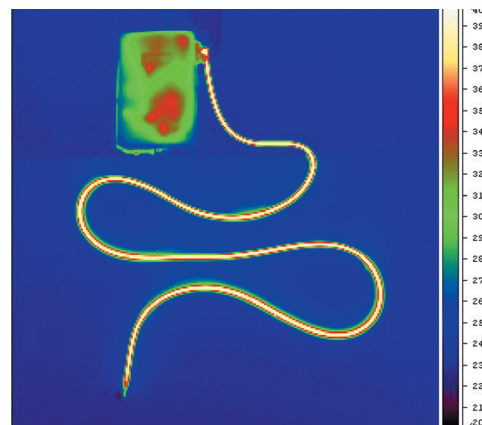
Performance You'll Warm Up To

Consistent Control for Temperature Management

The Hotline Blood and Fluid Warmer helps prevent perioperative hypothermia

General anaesthesia patients that experience inadvertent hypothermia, a common but preventative complication, are at risk for poor outcomes.¹ Adverse outcomes include thermal discomfort, delayed post anaesthetic recovery, increased perioperative blood loss, surgical wound infection, and duration of hospitalisation. It also affects antibody- and cell-mediated immune defense, oxygen availability and post-operative adverse myocardial events. Even mild hypothermia contributes to delayed recovery and increased patient care costs.²

The Hotline blood and fluid warmer help reduce the risk of inadvertent hypothermia by warming the fluids patient's receive during surgery. The way in which it works makes Hotline an excellent choice for any surgical procedure where patients may be at risk of even mild hypothermia.



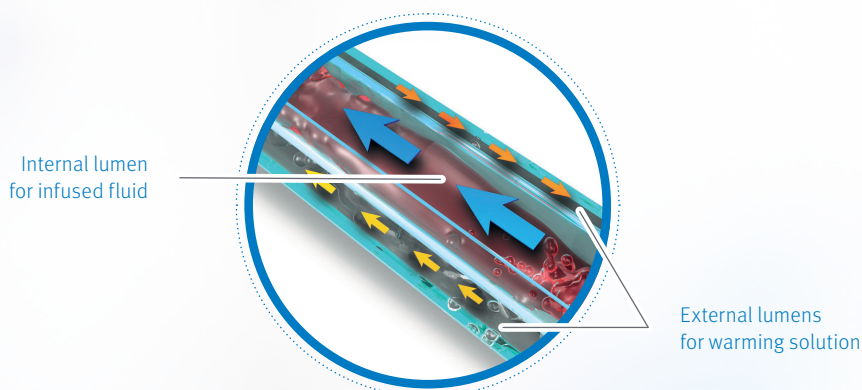
Hotline



Hotline (HL-90)

- › Delivers normothermic blood and fluids all the way to the patient, at gravity flow rates from 50 to 5000 mL/hour³, that is inherently free of 'hot spots'
- › Triple lumen eliminates patient line cool down at routine flow rates
- › Sterile Fluid Path
- › Electronic circuitry limits the recirculating solution to 42°C. In the unlikely event of a malfunction of the circuit, a second 'watchdog' circuit will alarm and stop the pump

Triple-Lumen Tubing Technology Provides Even Heating



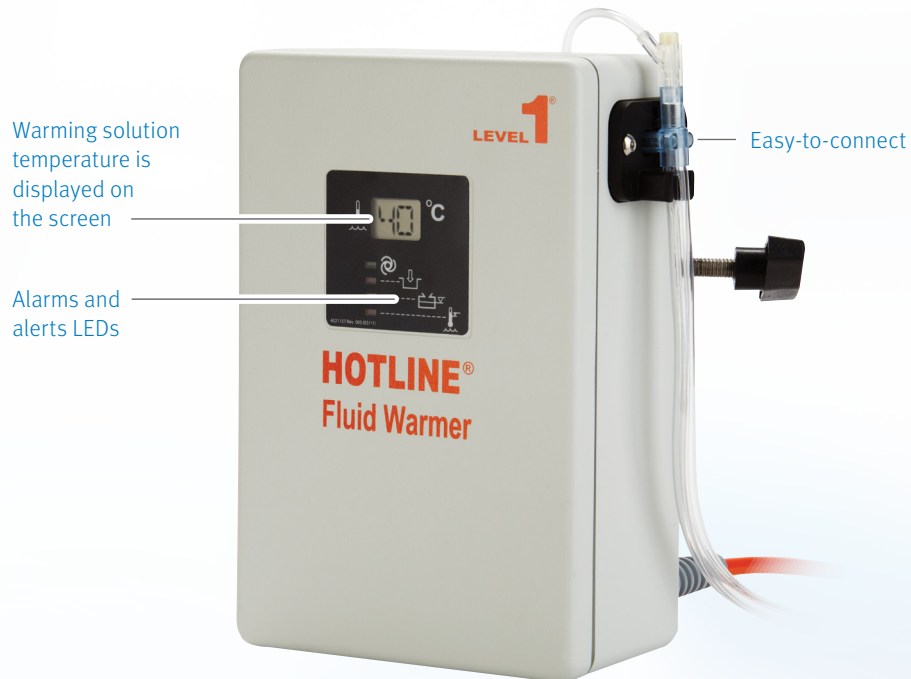
* When using hydrogen peroxide recirculating solution protocol

¹ NICE Hypothermia: prevention and management in adults having surgery. Clinical guideline [CG65] Published:23 April 2008 Last updated 14 December 2016. <https://www.nice.org.uk/guidance/cg65%20Accessed%209.12.2022>.

² Reynolds L, Beckmann, J and Kurz A. Perioperative complications of hypothermia. Best Pract Res Clin Anaesthesiol. 2008 Dec; 22(4): 645. doi: 10.1016/j.bpa.2008.07.005. Accessed 9.12.2022.

Hotline Blood and Fluid Warmer

Normothermic infusions, up to 5 liters at gravity flow rates/hour



Performance

- › Triple-lumen tubing provides even heating for normothermic fluid delivery all the way to the patient

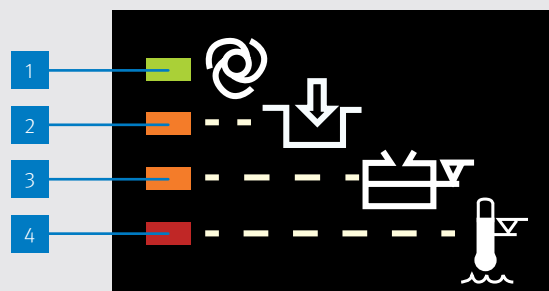
Safety and Efficiency

- › Warming solution temperature is displayed on the screen
- › Visual and sound alerts/alarms

Easy to Use

- › Dedicated disposables
- › Easy and quick set-up
- › Annual maintenance*

Alerts and Alarms



1. Green: Warmer is OK
2. Orange: Check disposable connection
3. Orange: Warming solution level below minimum
4. Red: Overheating of warming solution ($>43^{\circ}\text{C}$)
Warming solution stops circulating

For Routine Flow Warming, Choose the Brand Hospitals Trust



Hotline Blood and Fluid Warmer help keep patients warmer, case after case.



We offer a variety of disposables and accessories.

Ordering Information

Hotline Routine Flow Fluid Warmer Hardware		
Product Code	Description	Units Per Case
HL-90-UK-230	Hotline Blood and Fluid Warmer, 41°C/105.8°F Set Point	1

Hotline Routine Flow Fluid Warmer Disposables		
Product Code	Description	Units Per Case
L-70	Blood and IV Fluid Warming Set with Injection Port	30
L-70NI	Blood and IV Fluid Warming Set without Injection Port	30

Hotline Routine Flow Fluid Warmer Accessories		
Product Code	Description	Units Per Case
PC-8	T Connector	40
YC-8	Y Connector	40
L-10	Gas Vent	40
80-04-001	O-Ring Kit	1