

Dornier *Relax⁺*

Multifunctional Patient Table



Dornier *MedTech*

WE'RE ALL ABOUT PEOPLE.

Ideal for Endourology and ESWL

The Dornier *Relax+* is a transportable, motorized multifunctional table for endourology and extracorporeal shock wave lithotripsy (ESWL). The modular design and the comprehensive range of available accessories allows the table to be configured into an endourological workstation. This multifunctional capability ensures an easy transition from the lithotomy position to the ESWL position without the need for patient transfer.



As a lithotripsy table, the Dornier *Relax+* provides quick and easy patient positioning due to the wide range of table movement. The exchangeable, radiolucent table sections enhance X-ray imaging and provide treatment flexibility from both sides of the table.

With the ability to visualize the entire urinary tract and the variety of available accessories, the Dornier Relax+ is ideal for a wide range of procedures.



Variety of Procedures



Treatment Flexibility

The large travel ranges and four-axis movement of the Dornier *Relax+* are ideal for patient positioning. The table has X, Y, Z and Trendelenburg movements and two travel speeds. Additionally, the minimum table height provides easy patient transfer.



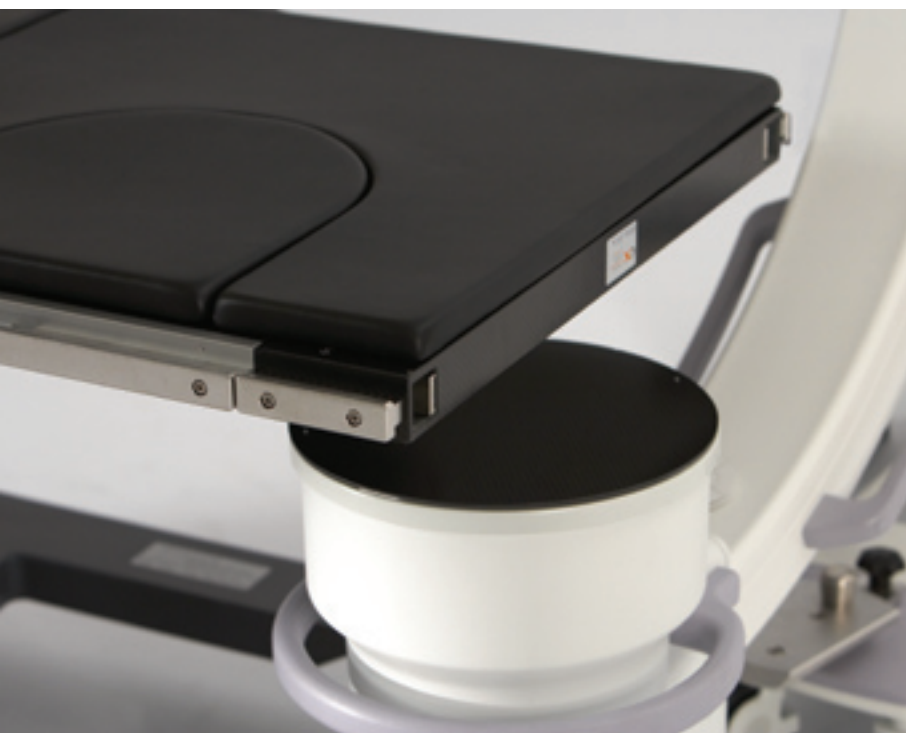
The Dornier *Relax+* can be tilted ± 15 degrees around the perineal end of the table. Simply use the hand control to select between standard and isocentric tilting. With isocentric tilting the perineal end of the table remains constant, eliminating the need for physician repositioning during procedures.

The table provides open access to the patient from all sides of the table. The generous space below the table, allows angled images to be captured in both the sagittal and transverse plane using C-arms.



Multiple Configurations

With the Dornier *Relax+* you can choose from three different carbon fiber mid-sections. All feature radiation transparency for high-quality X-ray images.



Zero-Bladder Cut-Off

The carbon fiber mid-section is radiolucent and allows imaging of the entire urological tract as well as an industry leading zero bladder cut-off feature making it ideal for a variety of urological procedures.



The single cut-out mid-section is ideal for X-ray and ultrasound assisted ESWL treatments in the undertable position.



The dual cut-out mid-section allows stones in the left and right urinary tract to be treated in one session without moving the patient.



The cut-outs in both mid-sections have the correct anatomical position in relation to the perineal table end and can be closed with the carbon fiber insert when performing overtable and auxiliary procedures.

Ergonomic Design

Versatility

The table's mid-sections and extensions are easily exchanged due to the system's modular design and carbon fiber extensions.



Transportability

The unrestricted mobility of the Dornier *Relax+* allows the table to be easily transported either with or without a patient. The table has four large individually swiveling caster wheels. The position of two of these casters can be locked for transportation over long distances. Additionally, the stackable sections and retractable power cable aids in the effortless transport of the table.



User-friendly Operation

The simple-to-use hand control of the Dornier *Relax+* facilitates precise patient positioning for treatment. All table movements and travel speeds are easily adjusted. The zero position is ideal for lithotripsy and the hand control allows the user to store three additional table memory positions.



Comprehensive Accessories



The flexible drain bag assembly attaches to the mid-section of the table for endourological procedures. Elbow rests attach to the drain assembly and provide comfort and support.

Leg supports attach to the t-rail and are easily adjustable. For a wider range of motion, gas spring stirrups in knee-crutch or boot style are also available.

Optional Accessories

- *I.V. pole*
- *Arm board with gel pad*
- *Multi axis foot pedal*
- *Shoulder support*
- *Head extension*
- *Compression belt*
- *Body strap*
- *Arm and leg restraints*
- *Positioning wedge*
- *Bolster*
- *Pediatric ESWL insert*
- *Orthopedics kit*

Please contact Dornier for a complete list of available accessories.



Headquarters

Dornier MedTech GmbH
Argelsrieder Feld 7
D-82234 Wessling
Germany

America

Dornier MedTech America, Inc.
1155 Roberts Boulevard
Suite 100
Kennesaw, GA 30144
USA
Phone: +1-770 426-1315
Fax: +1-770 426 6115
Email: info@dornier.com

Asia/Pacific

Dornier MedTech Asia Pte. Ltd.
51 Corporation Road
Singapore 649806
Phone: +65-6665-5788
Fax: +65-6665 6711
Email: infoasia@dornier.com

Japan

Dornier MedTech Japan
Meguro Estate Building
3-8-5 Kami-Ohsaki
Shinagawa-ku, Tokyo 141-0021
Japan
Phone: +81-3-3280 3550
Fax: +81-3-3280 3555
Email: info@domedtech.co.jp

Europe

Dornier MedTech Europe GmbH
Argelsrieder Feld 7
D-82234 Wessling
Germany
Phone: +49-8153-888 625
Fax: +49-8153-888 444
Email: infoeurope@dornier.com

Dornier MedTech Italia s.r.l.
Via Arrigo Cavaglieri N. 26
00173 Rome
Italy
Phone: +39-06-72 35 289
Fax: +39-06-72 35 302

Dornier MedTech Espana
Pedro Y Pons 9-11
Edificio Masters
E-08034 Barcelona
Spain
Phone: +34-93-203 9316
Fax: +34-93-205 3814

Dornier MedTech France SARL
156 rue des Castors
74330 Epagny
France
Phone: +33-450-22 18 94
Fax: +33-450-24 24 63

Dornier MedTech Europe GmbH
Moscow Representative Office
Uliza Mytnaya 3
Office 21
119049 Moskau
Russia
Phone: +7-495-230 29 94
Fax: +7-495-739 51 33