

## VolumeView System

### EV1000 clinical platform

The EV1000 clinical platform presents the physiologic status of the patient in an intuitive and meaningful way—offering maximum scalability and adaptability for the OR and ICU. The platform was thoughtfully designed to allow you to choose your own personal view, choose your parameters, and choose your level of invasiveness. Works with the FloTrac sensor, VolumeView set and PreSep and PediaSat oximetry catheters.

### VolumeView set

- ① VolumeView sensor ② VolumeView femoral arterial catheter  
③ VolumeView thermistor manifold ④ CVC (standard) ⑤ TruWave pressure transducer

### PreSep central venous oximetry catheter

The PreSep oximetry catheter may be used with the VolumeView set and the EV1000 clinical platform. It continuously monitors central venous oxygen saturation (ScvO<sub>2</sub>) and detects critical changes in hemodynamic status earlier.

PRODUCT CODE	PRODUCT DESCRIPTION	PACK SIZE
VLV8R520	5f 20 cm Catheter • 84" Volume View Sensor	1
VLV8R5205	5f 20 cm Catheter • 84" Volume View Sensor	5
VLV8R416	4f 16 cm Catheter • 84" Volume View Sensor	1
VLV8R4165	4f 16 cm Catheter • 84" Volume View Sensor	5
VLV8R5	84" Volume View Sensor	5
VLVCVT5	VolumeView Venous Injectate Kit	5
VLVFC5205	55f 20 cm Femoral Catheter Kit	5

Helping to advance the care of the acutely ill for 40 years, Edwards Lifesciences seeks to provide the valuable information you need, the moment you need it. Through continuing collaboration with you, ongoing education and our never-ending quest for advancement, our goal is to deliver clarity in every moment.

**Visit [www.Edwards.com/VolumeView](http://www.Edwards.com/VolumeView) to learn more**

**For professional use. CAUTION: Federal (United States) law restricts this device to sale by or on the order of a physician. See instructions for use for full prescribing information, including indications, contraindications, warnings, precautions and adverse events.**

Edwards Lifesciences devices placed on the European market meeting the essential requirements referred to in Article 3 of the Medical Device Directive 93/42/EEC bear the CE marking of conformity.

Edwards, Edwards Lifesciences, the stylized E logo, Clarity in Every Moment, EV1000, FloTrac, PediaSat, PreSep, Swan-Ganz, TruWave, and VolumeView are trademarks of Edwards Lifesciences Corporation. All other trademarks are the property of their respective owners.

© 2014 Edwards Lifesciences Corporation. All rights reserved. AR10767

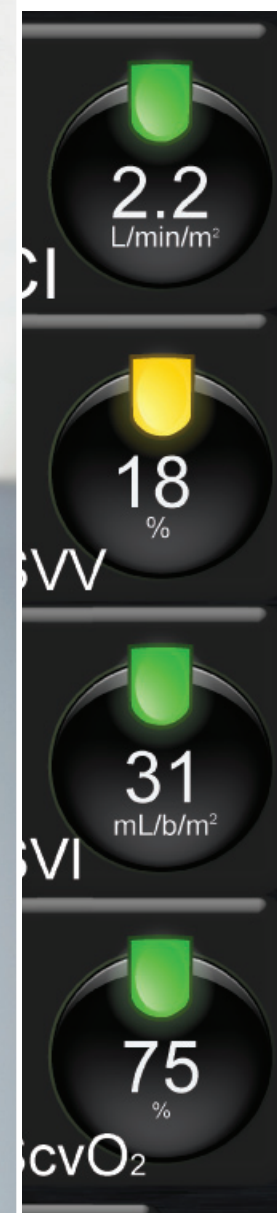
Edwards Lifesciences | [edwards.com](http://edwards.com)  
One Edwards Way | Irvine, California 92614 USA  
Switzerland | Japan | China | Brazil | Australia | India



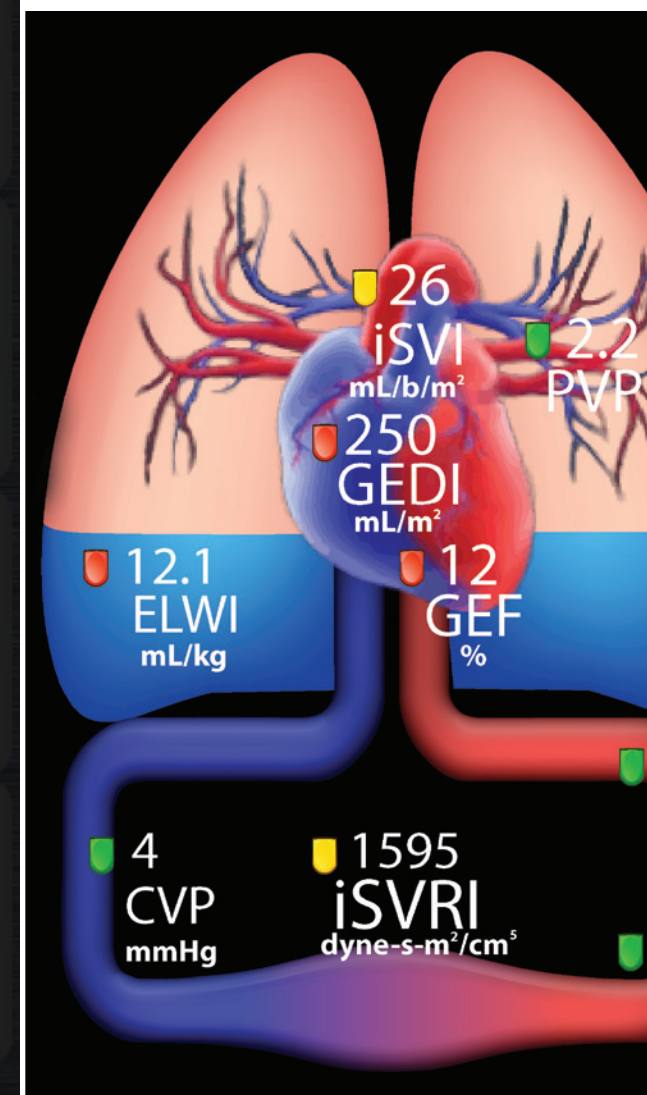
Edwards



**Evolving  
your view into  
thermodilution**



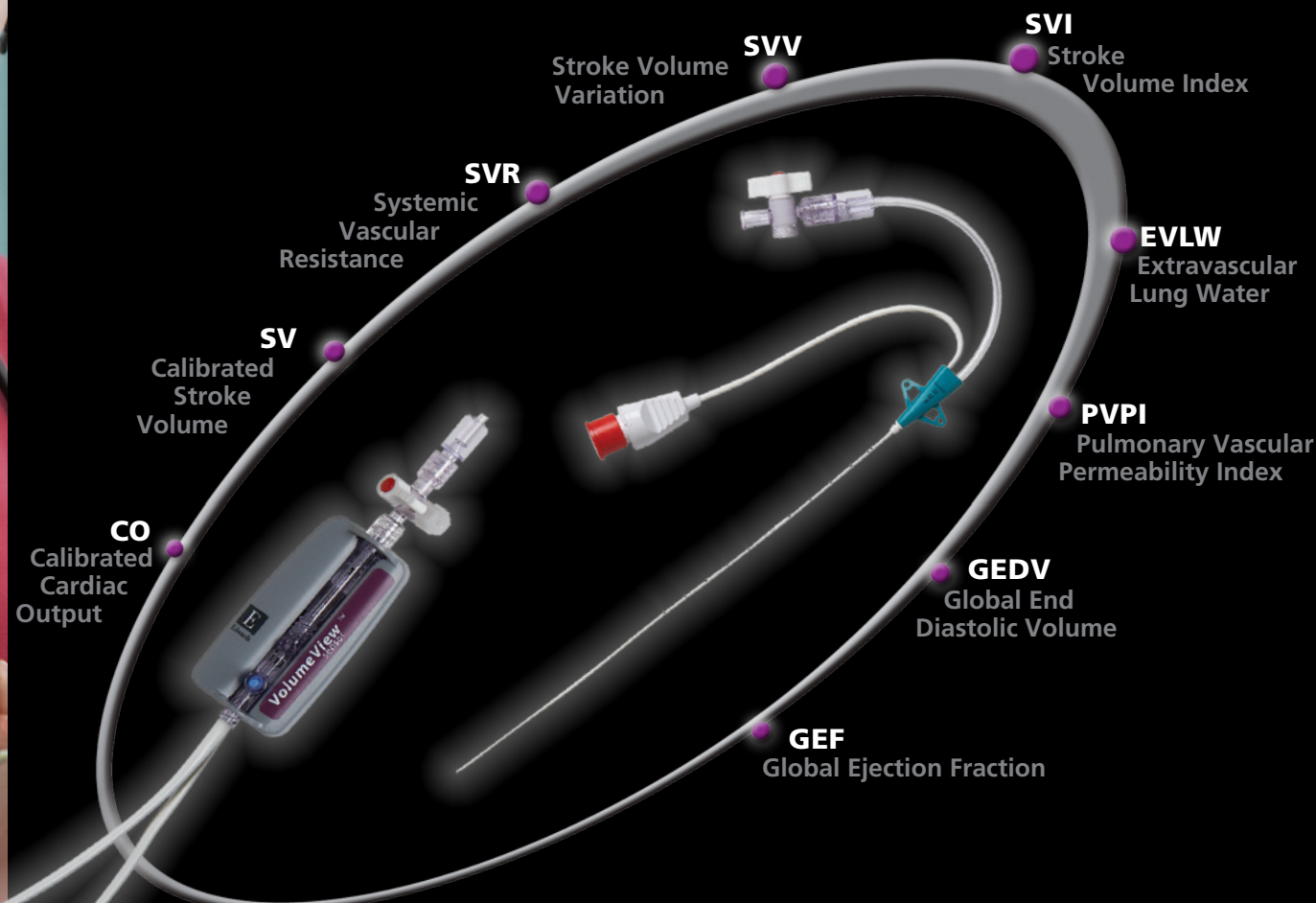
## VolumeView Set



Edwards

## VolumeView Set

## The next advancement in volumetrics.



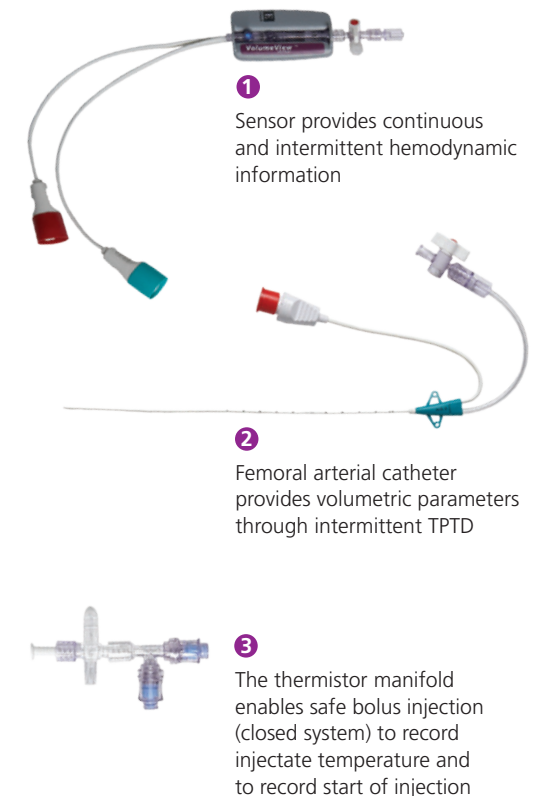
The VolumeView system from Edwards Lifesciences in combination with EV1000 clinical platform enables the display of valuable volumetric parameters in an entirely new, meaningful way. Delivered via the EV1000 clinical platform, the VolumeView system is able to offer you a unique, clear, visual depiction of patient physiologic status—including extravascular lung water (EVLW).

Intended for use in monitoring your acutely ill patients, the VolumeView set provides informative volumetric parameters (EVLW, PVPI, GEDV and GEF) that can be used specifically in the treatment of pulmonary edema, acute lung injury (ALI) or acute respiratory distress syndrome (ARDS). The volumetric parameters are provided via transpulmonary thermodilution (TPTD).

The VolumeView set also provides continuous trending of key hemodynamic parameters (CO, SV, SVR, SVV and SVI) via a patented Edwards proprietary VolumeView system algorithm. These parameters can also be calibrated through manual, intermittent transpulmonary thermodilution.

**View volumetric information in a new, meaningful way with the VolumeView system from Edwards Lifesciences.**

The VolumeView set is comprised of the VolumeView sensor, the VolumeView femoral arterial catheter and the VolumeView thermistor manifold.



### THE GLOBAL LEADER AND PIONEER IN HEMODYNAMIC MONITORING.

**1971**  
**Thermodilution**  
Swan-Ganz thermodilution pulmonary artery catheter

**1980**  
**Lung Water**  
Edwards lung water computer

**1989**  
**Volumetrics**  
Swan-Ganz volumetric pulmonary artery catheter

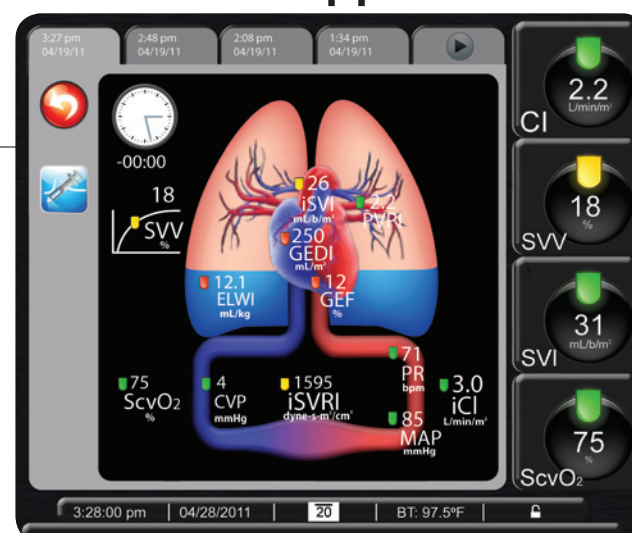
**2010**  
**Transpulmonary Thermodilution (TPTD)**  
VolumeView set

## The next advancement in visual clinical support. Evolving beyond numbers.

### EV1000 clinical platform physiology screen

The animated physiology screen of the EV1000 clinical platform depicts the dynamic physiologic changes occurring in your patient. The visual clinical support communicates cardiac output, vasodilation and vasoconstriction, volume status and pulmonary edema. These animations also make the physiology screen useful in a variety of teaching situations.

**The physiology screen enables quick treatment decision making through visual clinical decision support**



### EV1000 clinical platform physio-relationship screen

The physio-relationship screen of the EV1000 clinical platform depicts the balance between oxygen delivery and consumption, allowing you to identify the root cause of imbalance and the most appropriate intervention.

**The physio-relationship screen helps identify the source of problem clearly through the hierarchy of parameters**

